

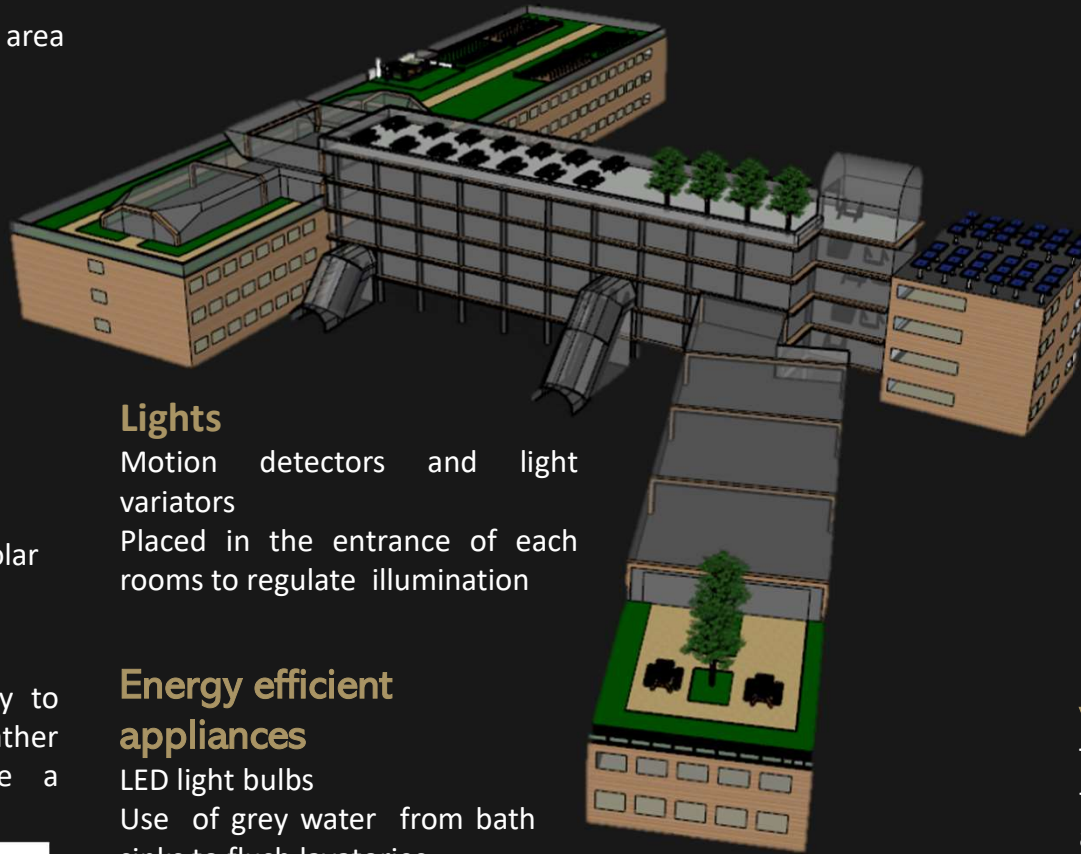
## Roof

Rooftop planting  
Rainwater harvesting systems  
Vegetalized patio designed to be a relaxing area



## « Particitive vegetable garden »

A place of sharing and mutual aid



- 1st storey : Study room
- 2<sup>nd</sup> storey : Study room
- 3<sup>rd</sup> storey : University library
- 4th storey : University restaurant
- Roof : Patio (Last storey)

## Windows

Triple-glazed windows and high-efficiency insulated glass  
Tinted windows which collect and stock solar energy

## Lights

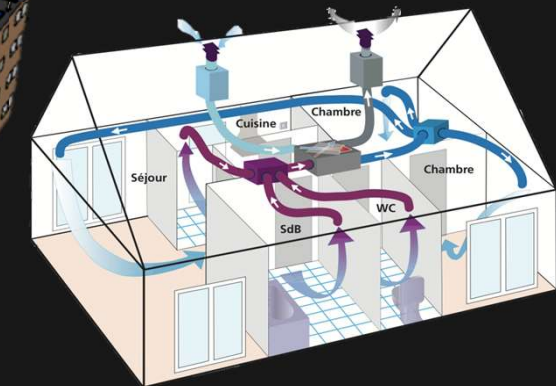
Motion detectors and light variators  
Placed in the entrance of each rooms to regulate illumination

## Air to water heat pump

Heat pump water heaters use electricity to move heat from one place to another rather than generating their own heat like a traditional electric water heater.

## Energy efficient appliances

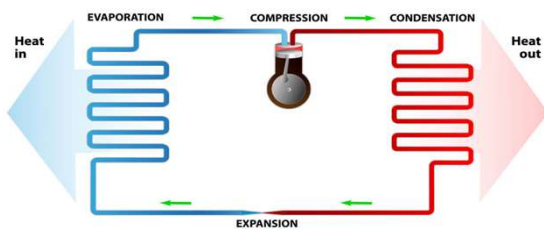
LED light bulbs  
Use of grey water from bath sinks to flush lavatories...



## Double-flow mechanical ventilation (CMV)

This system is used to limit heat losses due to ventilation: it recovers heat from waste air extracted from the home and uses it to warm fresh filtered air from outside.

### How does a heat pump work?



« THE NEW BELVEDERE » by

Téo PERON  
Théo RESTOIN  
Ianis VAILLANT

